



GLK24064-25
Technical Manual

Revision: 2.0

Contents

Contents	ii
1 Getting Started	1
1.1 Display Options Available	1
1.2 Accessories	1
1.3 Features	4
1.4 Connecting to a PC	4
1.5 Installing the Software	5
1.5.1 MOGD#	5
2 Hardware Information	6
2.1 DB-9 Connector	7
2.1.1 Power Through DB-9 Jumper	7
2.2 Manual Override	8
2.3 Keypad Interface Connector	9
2.4 Filesystem Lock Jumper	10
2.5 Power/Data Connector	11
2.5.1 Legacy Data Connector Jumpers	11
2.6 Protocol Select Jumpers	12
3 Troubleshooting	13
3.1 The display does not turn on when power is applied.	13
3.2 The display module is not communicating.	13
3.3 The display module is communicating, however text cannot be displayed.	13
3.4 There is a problem uploading fonts or bitmaps.	14
4 Communications	14
4.1 Introduction	14
4.1.1 I ² C Communication Summary	14
4.1.2 Serial Communication	15
4.2 Turn Flow Control On	15
4.3 Turn Flow Control Off	16
4.4 Changing the I ² C Slave Address	16
4.5 Changing the Baud Rate	17
4.6 Setting a Non-Standard Baud Rate	18
5 Fonts	19
5.1 Introduction	19
5.1.1 Font File Format	20
5.1.2 Creating a Font	20
5.2 Uploading a Font File	22
5.3 Setting the Current Font	22
5.4 Font Metrics	23
5.5 Set Box Space Mode	23

6	Text	24
6.1	Introduction	24
6.1.1	Character Set	24
6.1.2	Control Characters	24
6.2	Move Cursor Home	24
6.3	Setting the Cursor Position	25
6.4	Setting the Cursor Coordinate	25
6.5	Auto Scroll On	25
6.6	Auto Scroll Off	26
7	Bitmaps	26
7.1	Introduction	26
7.2	Uploading a Bitmap File	26
7.3	Drawing a Bitmap from Memory	27
7.4	Drawing a Bitmap Directly	27
8	Bar Graphs and Drawing	28
8.1	Introduction	28
8.2	Set Drawing Color	28
8.3	Draw Pixel	29
8.4	Drawing a Line	29
8.5	Continue a Line	29
8.6	Draw a Rectangle	30
8.7	Drawing a Solid Rectangle	30
8.8	Initializing a Bar Graph	31
8.9	Drawing a Bar Graph	31
8.10	Initializing a Strip Chart	32
8.11	Shifting a Strip Chart	33
9	Keypad	34
9.1	Introduction	34
9.1.1	I2C Interface	34
9.1.2	RS232 Interface	34
9.2	Auto Transmit Key Presses On	35
9.3	Auto Transmit Key Presses Off	35
9.4	Poll Key Press	35
9.5	Clear Key Buffer	36
9.6	Set Debounce Time	36
9.7	Set Auto Repeat Mode	37
9.8	Auto Repeat Mode Off	38
9.9	Assign Keypad Codes	38
10	Display Functions	39
10.1	Introduction	39
10.2	Clear Screen	39
10.3	Display On	39
10.4	Display Off	39

10.5	Set Brightness	40
10.6	Set and Save Brightness	40
10.7	Set Contrast	40
10.8	Set and Save Contrast	41
11	Filesystem	41
11.1	Introduction	41
11.1.1	File Upload Protocol	42
11.2	Wipe Filesystem	44
11.3	Deleting a File	44
11.4	Get Filesystem Space	44
11.5	Get Filesystem Directory	45
11.6	Filesystem Upload	45
11.7	Downloading a File	46
11.8	Moving a File	46
12	Data Security	46
12.1	Introduction	46
12.2	Set Remember	47
12.3	Data Lock	47
12.4	Set and Save Data Lock	49
12.5	Dump the Filesystem	49
12.6	Writes the Customer Data	49
12.7	Reads the Customer Data	49
13	Miscellaneous	50
13.1	Introduction	50
13.2	Read Version Number	50
13.3	Read Module Type	50
14	Command Summary	51
14.1	Communications	51
14.2	Fonts	52
14.3	Text	52
14.4	Bitmaps	53
14.5	Bar Graphs and Drawing	53
14.6	Keypad	54
14.7	Display Functions	54
14.8	Filesystem	55
14.9	Data Security	55
14.10	Miscellaneous	56
14.11	Command By Number	56

15 Appendix	58
15.1 Specifications	58
15.1.1 Environmental	58
15.1.2 Electrical	58
15.2 Optical Characteristics	59
15.3 Physical Layout	59
15.4 Definitions	59
15.5 Contacting Matrix Orbital	60

1 Getting Started



Figure 1: GLK24064-25-WB

The GLK24064-25 is an intelligent graphic LCD display designed to decrease development time by providing an instant solution to any project. With the ability to communicate via serial RS-232/TTL and I²C protocols, the versatile GLK24064-25 can be used with virtually any controller. The ease of use is further enhanced by an intuitive command structure to allow display settings such as backlight brightness, contrast and baud rate to be software controlled. Additionally, text and fonts may be uploaded to the display and stored in the on board memory.

1.1 Display Options Available

The GLK24064-25 comes in a variety of colors including the standard yellow/green, the popular blue/white and the crisp white/grey. Extended voltage, and temperature options are also available, to allow you to select the display which will best fit your project needs.

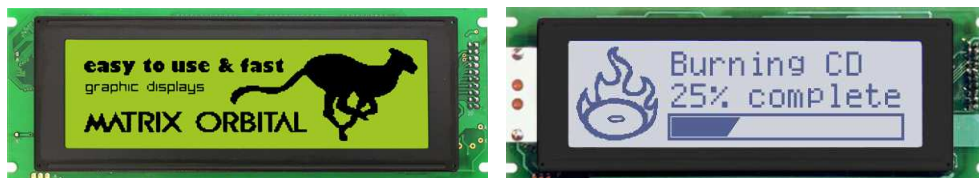


Figure 2: GLK24064-25 Options

1.2 Accessories

NOTE Matrix Orbital provides all the interface accessories needed to get your display up and running. You will find these accessories and others on our e-commerce website at <http://www.matrixorbital.com>. To contact a sales associate see Section 15.5 on page 60 for contact information.



Figure 3: 5V Power Cable Adapter



Figure 4: 12V Power Cable Adapter (V/VPT Models)



Figure 5: Breadboard Cable

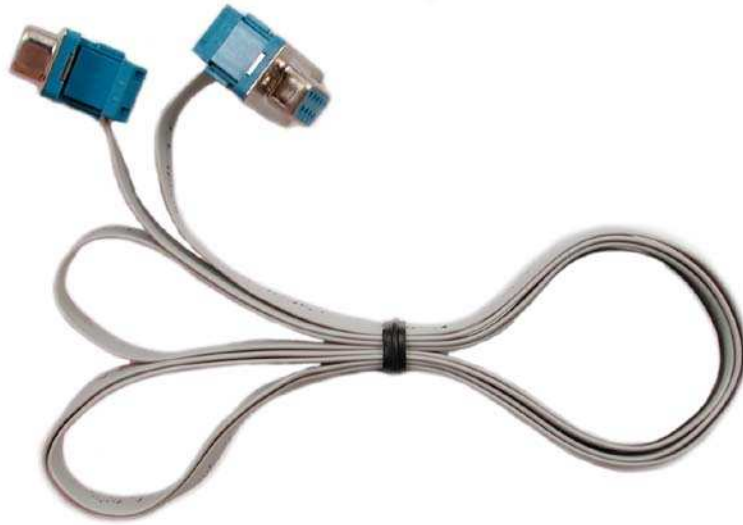


Figure 6: Serial Cable 4FT

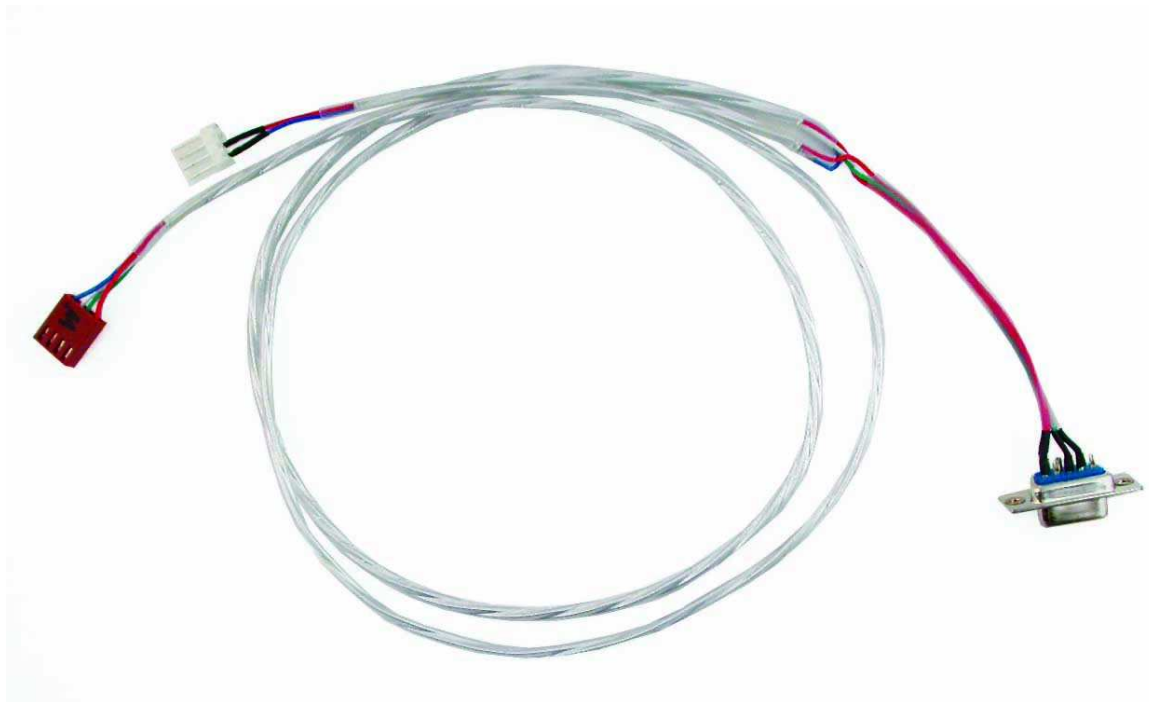


Figure 7: Communication and 5V Power Cable



Figure 8: 4X4 Keypad

1.3 Features

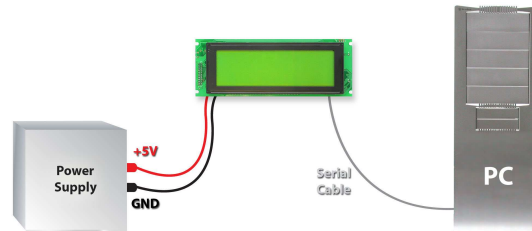
- 240 x 64 pixel graphics display
- Selectable communication protocol, RS-232 or I²C
- 128 byte buffered communication
- 16 KB flash memory for fonts and bitmaps
- Lightning fast communication speeds, up to 115 kbps for RS-232 and 400 kbps for I²C
- Display text using built in or user supplied fonts
- Adjustable contrast
- Adjustable backlight brightness
- Default 19.2 kbps serial communication speed
- Extended temperature available for extreme environments of -20C to 70C
- Extended voltage and efficient power supply available
- Support for up to a twenty-five key matrix style keypad

1.4 Connecting to a PC

The GLK24064-25 connects seamlessly to a PC and it is an excellent means of testing the functionality and uploading new fonts and bitmaps. You will require a standard RS-232 9-pin serial cable such as the one pictured in *figure 6 on the previous page*, as well as a modified 5V power adapter such as the one pictured in *figure 3 on page 2*.

In order to connect your display to a personal computer follow these easy instructions:

1. Plug the serial cable into the com port you wish to use.
2. Connect the modified 5V power adapter to a power lead from your PC power supply (you will have to open your computer case).
3. Connect the serial cable to the DB-9 connector on the back of the display.
4. Connect the 5V power adapter to the 4-pin connector on the back of the display.



WARNING DO NOT use the standard floppy drive power connector, as this will not provide you with the correct voltage and will damage the display module.

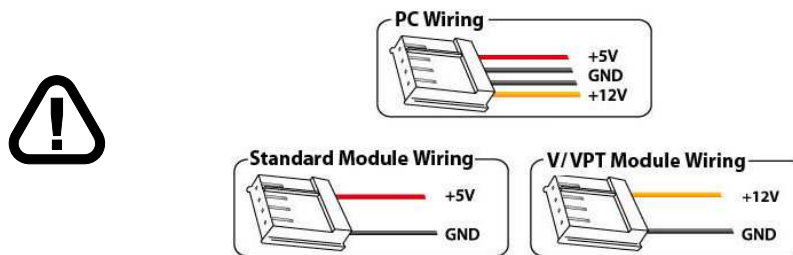


Figure 9: PC vs Matrix Orbital Display Module Wiring

1.5 Installing the Software

1.5.1 MOGD#

MOGD# is the latest updated version of MOGD and can be used to manage font and graphics downloads as well as exercise all of the features of our graphical displays. MOGD# provides a new user friendly interface as well as many feature enhancements.

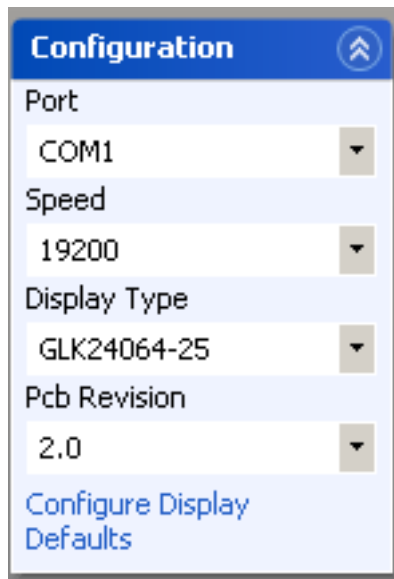
To install MOGD# from the Matrix Orbital CD, follow the following steps:

1. Insert the Matrix Orbital Cd-ROM into the CD drive
2. Locate the file *MogdSharp.zip*, which should be in the "CD-drive:\Download" directory
3. Unzip *MogdSharp.zip* to a temporary directory using a program such as Winzip, Pkzip, etc.
4. Double click on "setup.exe"
5. Follow the instructions on the screen to complete the installation

6. MOGD# requires the .NET framework 2.0 and will download and install it automatically

After the installation is complete there will be a Matrix Orbital entry under “Start->Programs->Matrix Orbital” in the start menu. Click on the 'Mogd Sharp' entry to run the program.

Be sure to check the information selected in the configuration panel the first time MOGD# is run. Once this information is entered correctly the program can be used to control all functions of the graphic display.



- Port** The serial port the display is plugged in to.
- Speed** The communication speed the display module is set to. (Default 19,200)
- Display Type** The type of display. (GLK24064-25)
- PCB Revision** The revision of the display you are using. (Found on the back of the PCB)

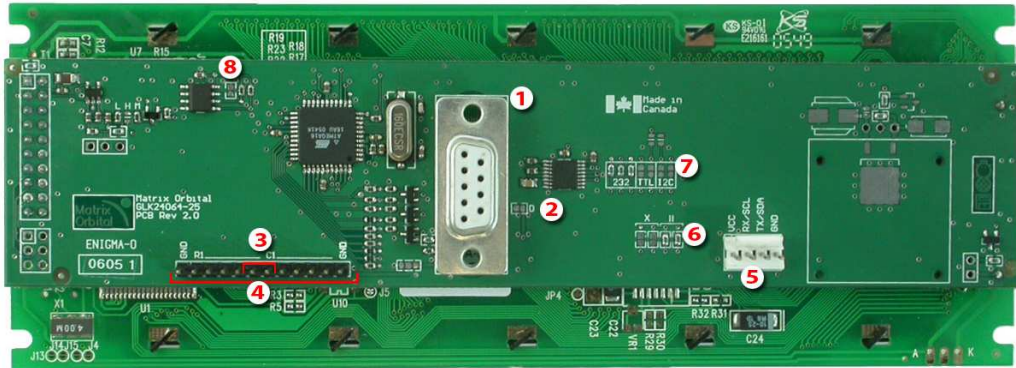
Figure 10: Mogd Sharp Settings

NOTES

- MOGD# may also be downloaded from Matrix Orbital's support site at http://www.matrixorbital.ca/software/software_graphic/MogdSharp
 - Winzip is available as a free download from <http://www.winzip.com>
-

2 Hardware Information

Refer to the following diagram for this chapter:

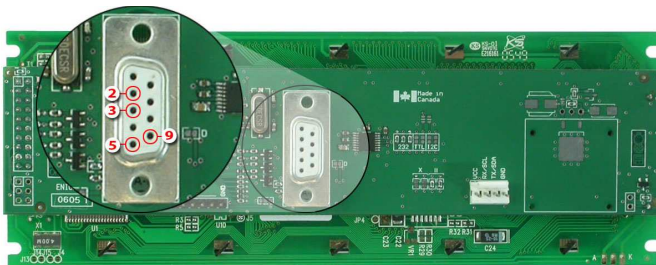


- 1 DB-9 Connector
- 2 Power Through DB9 Jumper
- 3 Manual Override
- 4 Keypad Interface Connector
- 5 Power / Data Connector
- 6 Legacy Connector Jumper
- 7 Protocol Select Jumpers
- 8 Filesystem Lock Jumper

Figure 11: GLK24064-25

2.1 DB-9 Connector

The GLK24064-25 provides a *DB-9 Connector* to readily interface with serial devices which use the EIA232 standard signal levels of $\pm 12V$ to $\pm 12V$. It is also possible to communicate at TTL levels of 0 to +5V by setting the *Protocol Select Jumpers* to TTL. As an added feature it is also possible to apply power through pin 9 of the *DB-9 Connector* in order to reduce cable clutter. However, in order to accomplish this you must set the *Power Through DB-9 Jumper*.



- Pin 2 Rx \ SCL (I²C clock)
- Pin 3 Tx \ SDA (I²C data)
- Pin 5 GND
- Pin 9 PWR (Must solder Power Through DB-9 Jumper. See table 2 on page 11 for power requirements.)

Figure 12: RS-232 Pin-out

2.1.1 Power Through DB-9 Jumper

In order to provide power through pin 9 of the *DB-9 Connector* you must place a solder jumper on the *Power through DB-9 Jumper* pictured in *figure 13* below. The GLK24064-25 allows all voltage models to use

the power through DB-9 option, see table2. The GLK24064-25 allows all voltage models to use the power through DB-9 option, see table 2 on page 11 for display module voltage requirements.

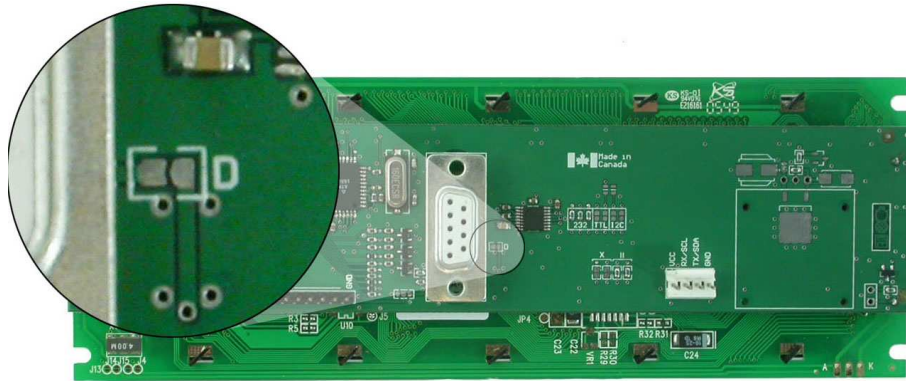


Figure 13: Power Through DB-9 Jumper



WARNING Do not apply voltage through pin 9 of the DB-9 connector AND through the Power/Data Connector at the same time.

2.2 Manual Override

The *Manual Override* is provided to allow the GLK24064-25 to be reset to factory defaults. This can be particularly helpful if the display module has been set to an unknown baud rate or I²C Slave Address and you are no longer able to communicate with it. If you wish to return the module to its default settings you must:

1. Power off the display module.
2. Place a Jumper on the *Manual Override* pins 1 and 2 as pictured below.
3. Power up the display module.
4. The display module is now set to its default values listed below in *table 1*.
5. Edit and save settings.

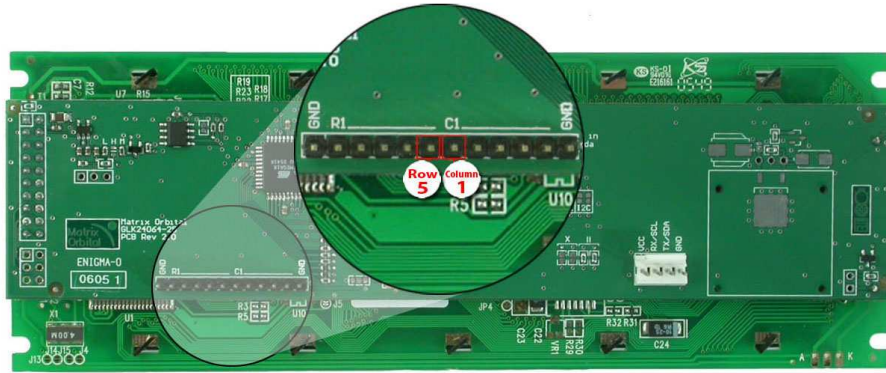


Figure 14: Manual Override Jumper

Table 1: Default Values

Contrast	128
Backlight	255
Baud Rate	19.2 kbps
I²C Slave Address	0x50
Data Lock	False
RS232AutoTransmitData	True

NOTE The display module will revert back to the old settings once turned off, unless the settings are saved.

2.3 Keypad Interface Connector

The GLK24064-25 provides a *Keypad Interface Connector* which allows for up to a five by five matrix style keypad to be directly connected to the display module. Key presses are generated when a short is detected between a row and a column. When a key press is generated a character, which is associated with the particular key press, is automatically sent on the Tx communication line. If the display module is running in I²C mode, the “Auto Transmit Keypress” function may be turned off, to allow the key presses to remain in the buffer so that they may be polled. The character that is associated with each key press may also be altered using the “Assign Key Codes” command, for more detailed information see the *Keypad Section, on page 34*.

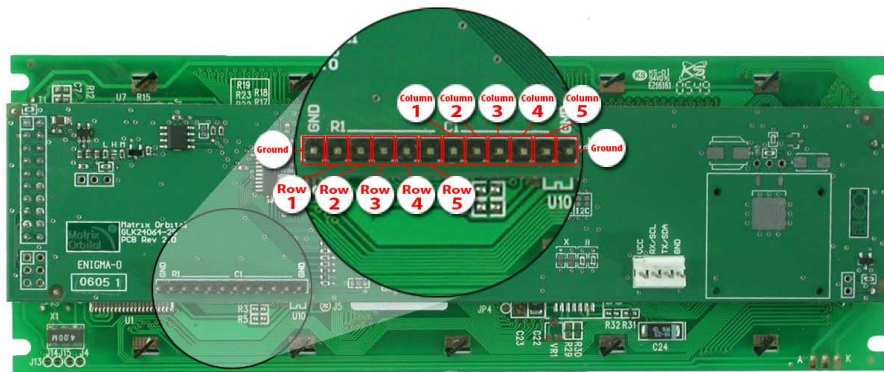


Figure 15: Keypad Interface Connector

2.4 Filesystem Lock Jumper

The *File System Lock Jumper* allows you to lock the filesystem on the GLK24064-25 so that no fonts or bitmaps can be either written or deleted from the on board memory. This feature is useful in order to protect data integrity of production units, if protection of other settings is required see *Section 12*.

To lock the file system, solder a zero ohm resistor or use a solder jumper on the *Filesystem Lock Jumper* pictured in *figure 16* below.

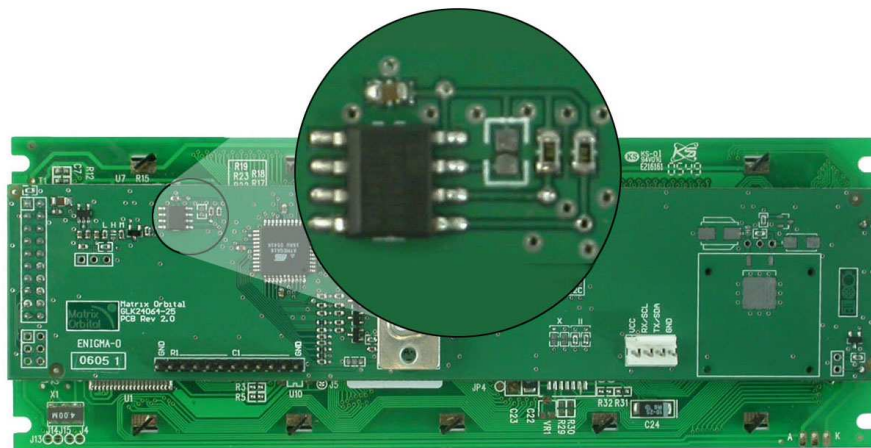


Figure 16: Filesystem Lock Jumper

2.5 Power/Data Connector

The *Power/Data Connector* provides a standard connector for powering the display module. The GLK24064-25 requires five volts for the standard display module, between nine to fifteen for the wide voltage (V) and between nine to thirty-five volts for the wide voltage with efficient power supply module (VPT). The voltage is applied through pins one and four of the four pin *Power/Data connector*. Pins two and three are reserved for serial transmission, using either the RS-232/TTL or the I²C protocol, depending on what has been selected by the *Protocol Select Jumpers*. Pins two and three may be reversed by changing the *Legacy Connector Jumpers* in order to be compatible with previous PCB revisions.

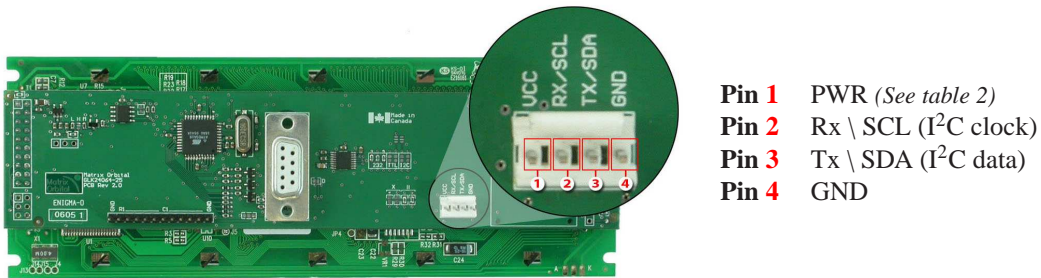


Figure 17: Power Connector and Pin-out

Table 2: Power Requirements

	Standard	-V	-VPT
Supply Voltage	+5Vdc \pm 0.25V	+9V to +15V	+9V to +35V
Supply Current	31 mA typical		
Supply Backlight Current	160 mA typical		



WARNINGS

- Do not apply any power with reversed polarization.
- Do not apply any voltage other than the specified voltage.

2.5.1 Legacy Data Connector Jumpers

To reverse pins two and three of the *Power/Data Connector* remove the zero ohm resistors from the *Legacy Data Connector Jumpers*, labeled with the \equiv symbol and place them on the jumpers labeled with the \times symbol. This will allow you to transmit on pin two, and receive data on pin three instead of the default of receiving on pin two and transmitting on pin three of the *Power/Data Connector*.

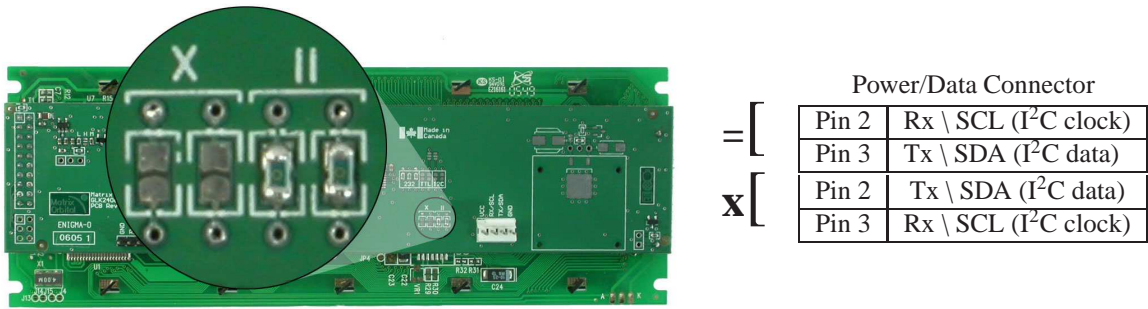


Figure 18: Legacy Data Connector Jumpers

2.6 Protocol Select Jumpers

The *Protocol Select Jumpers*, pictured below in *figure 19*, provide the means necessary to toggle the display module between RS-232, TTL and I²C protocols. As a default, the jumpers are set to RS-232 mode with zero ohm resistors on the 232 jumpers. In order to place the display module in I²C mode you must first remove the zero ohm resistors from the 232 jumpers and then solder the resistors on to the I²C jumpers. The display will now be in I²C mode and have a default slave address of 0x50 unless it has been changed. Similarly, in order to change the display to TTL mode, simply remove the zero ohm resistors from the 232 or I²C jumpers and solder them to the TTL jumpers.



Figure 19: Protocol Select Jumpers

3 Troubleshooting

3.1 The display does not turn on when power is applied.

- First, you will want to make sure that you are using the correct power connector. Standard floppy drive power cables from your PC power supply may fit on the Power/Data Connector however they do not have the correct pin-out as can be seen in *figure 9 on page 5*. Matrix Orbital supplies power cable adapters for connecting to a PC, which can be found in the *Accessories Section on page 1*.
- The next step is to check the power cable which you are using for continuity. If you don't have an ohm meter, try using a different power cable, if this does not help try using a different power supply.
- The last step will be to check the *Power / Data Connector* on the GLK24064-25. If the *Power / Data Connector* has become loose, or you are unable to resolve the issue, please contact Matrix Orbital see *15.5 on page 60* for contact information.

3.2 The display module is not communicating.

- First, check the communication cable for continuity. If you don't have an ohm meter, try using a different communication cable. If you are using a PC try using a different Com port.
- Second, please ensure that the display module is set to communicate on the protocol that you are using, by checking the *Protocol Select Jumpers*. To change the protocol used by the display module see *Section 2.6 on the preceding page*.
- Third, ensure that the host system and display module are both communicating on the same baud rate. The default baud rate for the display module is 19200 bps.
- If you are communicating to the display via I²C please ensure that the data is being sent to the correct address. The default slave address for the display module is 0x50.

NOTE I²C communication will always require pull up resistors.

- Finally, you may reset the display to it's default settings using the *Manual Override Jumper*, see *Section 2.2 on page 8*.

3.3 The display module is communicating, however text cannot be displayed.

- The cause of this is often that no font has been loaded onto the display. To load a font onto the display see *Section 4.2.1 on page 16*.
- Another common cause may be that the contrast settings have been set to low. The solution to this problem is to adjust the contrast settings, the default setting that will work in most environments is 128.

NOTE Optimal contrast settings may vary according to factors such as temperature, viewing angle and lighting conditions.

3.4 There is a problem uploading fonts or bitmaps.

- First, ensure that you can communicate to the display. A good test is to use a PC, with MOGD# installed, to connect to the display. See *Section 1.4 on page 4* for setting up a PC to test the GLK24064-25.
- Second, ensure that the *File System Lock Jumper* has not been set. See *Section 2.4 on page 10*.
- Third, please ensure that the display module's memory is not full. The GLK24064-25 has 16 Kb of memory for fonts and bitmaps.

NOTE If you are unable to resolve any issue please contact Matrix Orbital. See *15.5 on page 60* for contact information.

4 Communications

4.1 Introduction

The commands listed in this chapter describe how to configure data flow on the RS232/TTL and I²C port.

4.1.1 I²C Communication Summary

The is capable of communicating at 100 Kbps in I²C mode, with 127 units addressable on a single I²C communication line. However, in order to communicate via I²C you must first set the Protocol Select Jumpers as can be seen in *Section 2.6* and ensure that pull up resistors, with a nominal value of 1K to 10K, are placed on the SCL and SDA communication lines coming from pins two and three of the Data / Power Connector respectively. These pins are shared with RS232 and must be switched to I2C if this is how the host will be communicating with the display. Data responses by the module are automatically output via RS232, in case the host will be querying the module, it is necessary for the host to inform the module that its responses are to be output via I2C. This can be done by sending command 254 / 160 / 0 to turn off auto transmission of data in RS232. This will keep the data in the buffer until the master clocks a read of the slave. The I2C data lines operate at 5V. The uses 8-bit addressing, with the 8th or Least Significant Bit (LSB) bit designated as the read/write bit, a 0 designates a write address and a 1 designates a read address. The default read address of the display module will be 0x51, whereas the write address is 0x50 by default. This address may be changed by using cmd 254 / 51 / <address>. The should only be sent addresses that are even (LSB is 0). When the I2C master wishes to write to the display, the effective address is \$50 (0101 0000) , since the LSB has to be 0 for an I2C master write. When the I2C master wishes to read the , the effective address is \$51 (0101 0001), since the LSB has to be 1 for an I2C master read.

If we take a standard Phillips 7 bit address of \$45 (100 0101), Matrix Orbital's would describe this Phillips I2C address as \$8A (1000 1010). The read address would be \$8B (1000 1011).

The unit does not respond to general call address (\$00).

When communicating in I²C the will send an ACK on the 9th clock cycle when addressed. When writing to the display module, the display will respond with a ACK when the write has successfully been completed.

However if the buffer has been filled, or the module is too busy processing data it will respond with a NAK. When performing a multiple byte read within one I²C transaction, each byte read from the slave should be followed by an ACK to indicate that the master still needs data, and a NAK to indicate that the transmission is over.

The has some speed limitations, especially when run in I2C mode. Here are some considerations when writing I2C code:

- * to be able to read the replies of query commands (eg. cmds 54, 55) the following command must be sent (only needs to be sent once, so this can be done somewhere in init): 254 / 160 / 0 this command puts the reply data in the I2C output buffer instead of the RS232 output buffer. Please note that due to a 16 byte output buffer, query commands that reply with more than 16 bytes cannot be read (eg cmd Get FileSystem Directory)

- * 3ms delay between the read commands

- * 625us delay in between data bytes within a transaction is necessary

- * 375us between transactions is necessary

Because of the considerable amount of delays necessary for I2C, it is suggested that the users explore the possibility of using other built in graphic commands to clear areas of the display when refreshing all or part of the display. For example, instead of sending the clear screen command, consider sending a rectangle command with the proper size, this is much faster than clearing everything and re-drawing or writing spaces over the area.

4.1.2 Serial Communication

In addition to being able to communicate via I²C the communicates natively through the RS-232 protocol at a default baud rate of 19,200 bps and is capable of standard baud rates from 9600 to 115,200 bps. Furthermore the is also capable of reproducing any non-standard baud rate in between using values entered into our baud rate generation algorithm and set through command 164 (0xA4). The display module communicates at standard voltage levels of ±30V to ±30V or at TTL levels of 0 to +5V by setting the *Protocol Select Jumpers* to TTL.

4.2 Turn Flow Control On

Syntax	Hexadecimal	0xFE 0x3A [full] [empty]	
	Decimal	254 58 [full] [empty]	
	ASCII	254 “:” [full] [empty]	
Parameters	Parameter	Length	Description
	full	1	Bytes remaining before issuing a almost full message. (Full is 0)
	empty	1	Bytes available before issuing a almost empty message. (Empty is 128)

Description This command enables flow control. When the buffer fills so that only [full] bytes are available, the display will return an “almost full” message (0xFE) to the host controller. When the buffer empties so that only [empty] bytes remain, the display will return an “almost empty” message (0xFF) to the host controller.

The display will return the “almost full” message for every byte sent to the display until the used buffer space once more drops below the [full] level. Whether the user is in ‘flow control mode’ or not, the module will ignore display or command bytes which would overrun the buffer.

While in ‘flow control mode’ the unit will return 0xFE when buffer is almost full even though it may have already thrown rejected data away. The buffer size for the display is 128 bytes.

When using this command in an application, selection of the value for the buffer [full] should be considered very carefully. This is a critical aspect to be able to use this feature to it’s full potential. When using a host system or PC which contains a FIFO, the user should set the value of [full] equal to or greater than the size of the FIFO. The reason for this is that the FIFO may be full when the host system receives 0xFE. In the case of 16550 UART the size at its maximum is 16, therefore the value of [full] should be set to 16 or greater. It is suggested that the “almost full” parameter be equal to the largest chunk of data the host will be sending the display (should be less than 127).

NOTE This command is not available in I2C mode.

Remembered Yes
 Default Off

4.3 Turn Flow Control Off

Syntax Hexadecimal 0xFE 0x3B
 Decimal 254 59
 ASCII 254 “;”

Description This command turns off flow control. Bytes may overflow the buffer without warning.

NOTE This command is not available in I2C mode.

Remembered Yes

4.4 Changing the I²C Slave Address

Syntax	Hexadecimal	0xFE 0x33 [adr]	
	Decimal	254 51 [adr]	
	ASCII	254 “3” [adr]	
Parameters	Parameter	Length	Description
	adr	1	The new I ² C write address (0x00 - 0xFF).
Description	This command sets the I ² C write address of the module between 0x00 and 0xFF. The I ² C write address must be an even number and the read address is automatically set to one higher. For example if the I ² C write address is set to 0x50, then the read address is 0x51.		

NOTE The change in address is immediate.

Remembered	Always
Default	0x50

4.5 Changing the Baud Rate

Syntax	Hexadecimal	0xFE 0x39 [speed]	
	Decimal	254 57 [speed]	
	ASCII	254 “9” [speed]	
Parameters	Parameter	Length	Description
	speed	1	Hex value corresponding to a baud rate.

Description This command sets the RS-232 port to the specified [speed]. The change takes place immediately. [speed] is a single byte specifying the desired port speed. Valid speeds are shown in the table below. The display module can be manually reset to 19,200 baud in the event of an error during transmission, including transmitting a value not listed below, by setting the manual override jumper during power up. However, it should be noted that this command will be ignored until the manual override jumper is removed again.

Hex Value	Baud Rate
0xCF	9600
0x8A	14400
0x67	19200
0x44	28800
0x33	38400
0x22	57600
0x19	76800
0x10	115200

NOTE This command is not available in I2C mode.

Remembered Always
 Default 19,200 bps

4.6 Setting a Non-Standard Baud Rate

Syntax Hexadecimal 0xFE 0xA4 [speed]
 Decimal 254 164 [speed]

Parameter	Length	Description
speed	2	Inputed LSB MSB from baud rate formula (12-2047).

Description This command sets the RS-232 port to a non-standard baud rate. The command accepts a two byte parameter that goes directly into the modules baud generator. Use the formula, $speed = \frac{CrystalSpeed}{8 \times DesiredBaud} - 1$ to calculate the [speed] for any baud rate setting. The speed can be anywhere from 12 to 2047 which corresponds to a baud range of 977 to 153,800 baud. Setting the baud rate out of this range could cause the display to stop working properly and require the Manual Override jumper to be set.

Remembered Always

Examples

Crystal Speed 16 Mhz

Desired BAUD 13,500

$$speed = \frac{crystalspeed}{8 * DesiredBaud} - 1 \quad speed = \frac{16,000,000}{8 * 13,500} - 1$$

$$speed = 148.15 - 1$$

$$speed = 147.15$$

- **LSB** = 0x93 (rounded)
- **MSB** = 0x00
- Intended Baud Rate: 13,500 baud Actual Baud Rate:
 $\frac{16,000,000}{8(147+1)} = 13,514$ Percent Difference: 0.1%

NOTES

- Results from the formula are rounded down to the nearest whole number (i.e 73.07 = 73).
- This formula becomes less accurate as baud rates increase, due to rounding.
- Place the speed result backwards into the formula to receive the actual baud rate.
($Baud = \frac{CrystalSpeed}{8(speed+1)}$)
- The actual baud rate must be within 3% of the intended baud rate for the device to communicate.

NOTES

- This command is not available in I2C mode.
-

5 Fonts

5.1 Introduction

The comes loaded with the 'Small Filled' and 'Futura Bk BT 16' fonts by default. However, it is capable of displaying any font that is uploaded to it in the correct format. MOGD# provides a simple method of generating font files from your installed fonts. For instructions on how to install MOGD# see *Section 1.5.1 on page 5*.

5.1.1 Font File Format

A font file consists of three parts, a header, a character table and bitmap data.

1. Header (4 bytes)
 - (a) Nominal Width (1 byte)
 - (b) Height (1 byte)
 - (c) ASCII Start Value (1 byte)
 - (d) ASCII End Value (1 byte)
2. Character Table (3 bytes for every character between the ASCII Start and End values inclusive)
 - (a) High Offset MSB (1 byte)
 - (b) Low Offset LSB(1 byte)
 - (c) Character Width (1 byte)
3. Bitmap Data

5.1.2 Creating a Font

The following is an example of how to create a font file for the letters *h*, *i* and *j*.

First you must create the bitmaps containing the character data in bitmap form. *Figure 20* below illustrates the bit pattern for the *h*, *i* and *j* bitmap data.

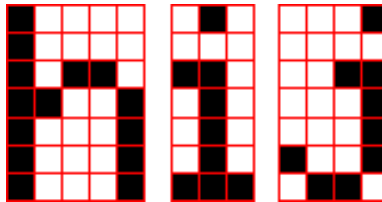


Figure 20: Bitmaps for h, i, and j

Second you may begin to create the font file starting with the header. The header will contain the nominal width, the height and the ASCII start and end values inclusive that you wish to create characters for.

Table 8: Font File Header

Nominal Width	Height	ASCII Start Val	ASCII End Val
0x05	0x07	0x49	0x4B

Next we will have to find out how many bytes each character will use up, in order to create the character table. The bitmaps are encoded horizontally and may have variable widths, *h* has a width of five, *i* a width of three and *j* a width of four, see the figure below for an example of encoding the first letter *h*:

Bitmap Data					Byte	Hex Value
1	0	0	0	0		
1	0	0	0	0	10000100	0x84
1	0	1	1	0	00101101	0x2D
1	1	0	0	1	10011000	0x98
1	0	0	0	1	11000110	0xC6
1	0	0	0	1	00100000	0x20
1	0	0	0	1		

Figure 21: Bitmap Encoding

As you can see the letter *h* will take up five bytes with the last five bits being zero padded to form a full byte. So if you continue the process you will get the character data as seen in *table 5.1.2*.

Character Data

	Character Data					Byte Size (For Reference)
<i>h</i>	0x84	0x2D	0x98	0xC6	0x20	0x05
<i>i</i>	0x43	0x24	0x84			0x03
<i>j</i>	0x2D	0x98	0x19	0x60		0x04

The second part of the font file is the character table. The character table is comprised of three bytes for every glyph in the font file.

The first two bytes represents the position, in bytes, of the glyph stored MSB LSB referenced from the beginning of the file (including the header. The third byte is the width of the glyph in pixels. So because there will be 0x09 bytes in the character table (three bytes for each glyph) and four bytes in the header section, the first entry in the table will be 13, or 0x00 0x0D in hexadecimal, and 0x05 for the width.

To calculate the second entry in the character table, representing the position and width of the second glyph, take the offset of the first entry and add the size of the first bitmap in bytes. Since the first glyph occupies 0x05 bytes as seen in table 5.1.2 above, and the offset is 0x00 0x0D, the offset of the second entry will be 0x00 0x12 and the width of the glyph is 0x03.

Calculate the third entry the same way as the second to get *table 9* below.

Table 9: Character Table

	High Offset (MSB)	Low Offset (LSB)	Character Width
<i>h</i>	0x00	0x0D	0x05
<i>i</i>	0x00	0x12	0x03
<i>j</i>	0x00	0x15	0x04

Once completed, place the character table after the header and the character data at the end, as seen in *table 10*.

Table 10: Sample Font File

0x05	0x07	0x49	0x4B	0x00	0x0D	0x05	0x00
0x12	0x03	0x00	0x15	0x04	0x84	0x2D	0x98
0xC6	0x20	0x43	0x24	0x84	0x2D	0x98	0x19
0x60							

Red = Header

Blue = Character Table

Purple = Character Data

5.2 Uploading a Font File

Syntax	Hexadecimal	0xFE 0x24 [refID] [size] [data]	
	Decimal	254 36 [refID] [size] [data]	
	ASCII	254 "\$" [refID] [size] [data]	
Parameters	Parameter	Length	Description
	refID	1	A unique font identification number.
	size	2	Font file size (LSB to MSB).
	data	x	Font file data.
Description	<p>In order to upload a font to the you must first initiate the upload font file command (0xFE 0x24), you must then pass it a reference identification number, which must be unique for every font on the display module. You may then pass the display module the two byte file size, which needs to be transferred LSB, then MSB. The last part of uploading a font is transmitting the font file data.</p> <p>For detailed instructions on uploading a file to the see <i>Section 11 on page 41</i>.</p>		

NOTE This command is not available in I2C.

Remembered Always

5.3 Setting the Current Font

Syntax	Hexadecimal	0xFE 0x31 [refID]	
	Decimal	254 49 [refID]	
	ASCII	254 "1" [refID]	
Parameters	Parameter	Length	Description
	refID	1	A unique font identification number.

Description	In order to set the font on the you must know the font identification number of the font that you wish to use. The font ID is established when the font is saved to the display. The default installed fonts are “Small Filled” and “Futura Bk BT 16” and their font ID’s are 0x01 and 0x02 respectfully, with “Small Filled” being the default selected font. Once you are aware of the font ID for the font that you wish you use, simply send the command bytes (0xFE 0x31) and then send the font ID corresponding to the font. A directory listing of the contents of the entire filesystem may be obtained by using the “Get Filesystem Directory” command, see Section 11.5 on page 45 for more detailed information.
Remembered	Yes

5.4 Font Metrics

Syntax	Hexadecimal	0xFE 0x32 [lm] [tm] [csp] [lsp] [srow]	
	Decimal	254 50 [lm] [tm] [csp] [lsp] [srow]	
	ASCII	254 “2” [lm] [tm] [csp] [lsp] [srow]	
Parameters	Parameter	Length	Description
	lm	1	Left margin: Location in pixels.
	tm	1	Top margin: Location in pixels.
	csp	1	Character Spacing: Amount of space in pixels between characters.
	lsp	1	Line Spacing: Amount of space between lines in pixels.
	srow	1	Scroll Row: The Y location of the last row in pixels.
Description	Font metrics define where the characters are positioned on the screen, by setting where the rows and columns begin based on the [lm][tm][csp][lsp][srow] parameters. [lm] defines the leftmost position and [tm] the topmost. [csp] controls the amount of pixels that are placed in between characters and [lsp] controls the amount of pixels that are placed in between lines. [srow] is the location of the top of the last row that will be displayed on the . It defines the row that, when filled, will cause the display to auto scroll if auto scrolling is enabled. The font metrics will have to be reconfigured after changing to a different font.		
Remembered	Yes		

5.5 Set Box Space Mode

Syntax	Hexadecimal	0xFE 0xAC [value]
	Decimal	254 172 [value]

Parameters	Parameter	Length	Description
	value	1	Value (0: Off, 1: On)
Description	This command will toggle the box space mode. Box space mode is when a box, the size of the character to be written, is printed to the display before a character is written.		
Remembered	Yes		
Default	On		

6 Text

6.1 Introduction

The is an intelligent display module, designed to reduce the amount of code necessary to begin displaying data. This means that it is able to display all characters and strings that are sent to it, which are defined in the current character set. The display module will begin displaying text at the top left corner of the display area, known as home, and continue to print to the display as if it was a page on a typewriter. When the text reaches the bottom right row, it is able to automatically scroll all of the lines up and continue to display text, with the auto scroll option set to on.

6.1.1 Character Set

The graphic displays such as the , do not have built in character sets. Instead fonts are uploaded to the display using the commands detailed in Section 5 on page 19.

6.1.2 Control Characters

In addition to a full text set, the display supports the following ASCII Control characters:

0x0A Line feed / New line - when this value is not defined in the font file. This command will create a new line on the display. If scrolling is on and the display is at the bottom of the screen, the whole screen is scrolled up.

6.2 Move Cursor Home

Syntax	Hexadecimal	0xFE 0x48
	Decimal	254 72
	ASCII	254 "H"
Description	This command moves the text insertion point to the top left of the display area (Row 1, Column 1).	
Remembered	No	

6.3 Setting the Cursor Position

Syntax	Hexadecimal	0xFE 0x47 [col] [row]									
	Decimal	254 71 [col] [row]									
	ASCII	254 “G” [col] [row]									
Parameters	<table border="1"><thead><tr><th>Parameter</th><th>Length</th><th>Description</th></tr></thead><tbody><tr><td>col</td><td>1</td><td>Column</td></tr><tr><td>row</td><td>1</td><td>Row</td></tr></tbody></table>	Parameter	Length	Description	col	1	Column	row	1	Row	
Parameter	Length	Description									
col	1	Column									
row	1	Row									
Description	This command sets the text insertion point to the [col] and [row] specified. The insertion point is positioned using the base size of the current font (this command does not position the insertion point at a specific pixel). The column used is determined by multiplying the width of the widest character in the font by the [column]. The row used is determined by multiplying the height of the font by [row + Metrics: line spacing].										
Remembered	No										

6.4 Setting the Cursor Coordinate

Syntax	Hexadecimal	0xFE 0x79 [x] [y]									
	Decimal	254 121 [x] [y]									
	ASCII	254 “y” [x] [y]									
Parameters	<table border="1"><thead><tr><th>Parameter</th><th>Length</th><th>Description</th></tr></thead><tbody><tr><td>x</td><td>1</td><td>The horizontal position in pixels.</td></tr><tr><td>y</td><td>1</td><td>The vertical position in pixels.</td></tr></tbody></table>	Parameter	Length	Description	x	1	The horizontal position in pixels.	y	1	The vertical position in pixels.	
Parameter	Length	Description									
x	1	The horizontal position in pixels.									
y	1	The vertical position in pixels.									
Description	This command positions the insertion point at a specific pixel (X,Y), which references the top left corner of the font insertion point.										
Remembered	No										

6.5 Auto Scroll On

Syntax	Hexadecimal	0xFE 0x51
	Decimal	254 81
	ASCII	254 “Q”
Description	When auto scrolling is on, it causes the display to shift the entire display’s contents up to make room for a new line of text when the text reaches the end of the scroll row defined in the font metrics (the bottom right character position) see <i>Section 5.4 on page 23</i> .	
Remembered	Yes	

Default On

6.6 Auto Scroll Off

Syntax Hexadecimal 0xFE 0x52
 Decimal 254 82
 ASCII 254 “R”

Description When auto scrolling is disabled, text will wrap to the top left corner of the display area when the text reaches the end of the scroll row defined in the font metrics (the bottom right character position) see *Section 5.4 on page 23*. Existing text in the display area is not erased before new text is placed. A series of spaces followed by a “Cursor Home” command may be used to erase the top line of text.

Remembered Yes

7 Bitmaps

7.1 Introduction

One of the main features of the is its ability to display bitmap images, that are either loaded onto its on board memory, or written directly to the screen. This chapter will cover creating a bitmap, uploading the bitmap, as well as drawing the bitmap from memory and directly.

7.2 Uploading a Bitmap File

Syntax Hexadecimal 0xFE 0x5E [refID] [size] [data]
 Decimal 254 94 [refID] [size] [data]
 ASCII 254 “^” [refID] [size] [data]

Parameters	Parameter	Length	Description
	refID	1	A unique bitmap identification number.
size	2	Bitmap file size (LSB to MSB).	
data	x	Bitmap data.	

Description The is capable of storing font and bitmap files up to 16 Kbytes. In order to upload a bitmap to the you must first initiate the upload font file command (0xFE 0x5E), you must then pass it a reference identification number, which must be unique for every font on the display module. You may then pass the display module the two byte file size, which needs to be transfered LSB, then MSB. The last part of uploading a bitmap is transmitting the bitmap file data. For detailed instructions on uploading a file to the see *Section 11 on page 41*.

NOTE This command is not available in I2C.

Remembered Always

7.3 Drawing a Bitmap from Memory

Syntax	Hexadecimal	0xFE 0x62 [refID] [X] [Y]	
	Decimal	254 98 [refID] [X] [Y]	
	ASCII	254 “b” [refID] [X] [Y]	
Parameters	Parameter	Length	Description
	refID	1	The bitmap identification number.
	X	1	Left bounds.
	Y	1	Top bounds.
Description	This command will draw a bitmap that is located in the on board memory. The bitmap is referenced by the bitmaps reference identification number, which is established when the bitmap is uploaded to the display module. The bitmap will be drawn beginning at the top left, from the specified X,Y coordinates. A directory listing of the contents of the entire filesystem may be obtained by using the “Get Filesystem Directory” command, see Section 11.5 on page 45 for more detailed information.		
Remembered	No		

7.4 Drawing a Bitmap Directly

Syntax	Hexadecimal	0xFE 0x64 [X] [Y] [W] [H] [D]			
	Decimal	254 100 [X] [Y] [W] [H] [D]			
	ASCII	254 “d” [X] [Y] [W] [H] [D]			

Parameters	Parameter	Length	Description
	X	1	Left bounds.
	Y	1	Top bounds.
	W	1	Width
	H	1	Height
	D	1	Data

Description Drawing a bitmap to the , without first uploading the image to the memory can be a very useful feature for drawing images that are not used very often. In order to accomplish this, you must supply the display module with the X,Y coordinates, representing the top left corner of where you would like to draw the bitmap on the screen, as well as the width and the height of the bitmap. After you have supplied this data you may then upload the bitmap data to the . The bitmap data is encoded into bytes horizontally and is transferred the same as if you were uploading a file, see *Section 11 on page 41* for more information about transferring data to the display module.

NOTE Drawing a bitmap directly to the display is supported by flow control. This command is not available in I2C mode.

Remembered No

8 Bar Graphs and Drawing

8.1 Introduction

Supplementary to the ability of the to display bitmaps and fonts, the also allows for a robust 2D drawing environment. With the ability to draw by pixel, line or rectangle, as well as the ability to continue a line to form a polygon, we are certain that you will spend less time, developing and creating better looking projects. With the addition of custom bar and strip graphs, you are sure to find the right tools to make any graphical layout a success.

8.2 Set Drawing Color

Syntax	Hexadecimal	0xFE 0x63 [color]	
	Decimal	254 99 [color]	
	ASCII	254 "c" [color]	
Parameters	Parameter	Length	Description
	color	1	Drawing color (0: White, 1-255: Black).

Description This command sets the drawing color for subsequent graphic commands that do not have the drawing color passed as a parameter. The parameter [color] is the value of the color where white is 0 and black is 1-255.

Remembered No

8.3 Draw Pixel

Syntax Hexadecimal 0xFE 0x70 [x] [y]
Decimal 254 112 [x] [y]
ASCII 254 "p" [x] [y]

Parameter	Length	Description
x	1	X screen location.
y	1	Y screen location.

Description This command will draw a pixel at (x,y) using the current drawing color. The unit processes these requests fast enough to keep up with a steady stream at 115 Kbps so flow control is not required.

Remembered No

8.4 Drawing a Line

Syntax Hexadecimal 0xFE 0x6C [x1] [y1] [x2] [y2]
Decimal 254 108 [x1] [y1] [x2] [y2]
ASCII 254 "l" [x1] [y1] [x2] [y2]

Parameter	Length	Description
x1	1	Left bounds.
y1	1	Top Bounds.
x2	1	Right Bounds.
y2	1	Bottom Bounds.

Description This command will draw a line from (x1,y1) to (x2,y2) using the current drawing color. Lines may be drawn from any part of the display to any other part. However, it may be important to note that the line may interpolate differently right to left, or left to right. This means that a line drawn in white from right to left may not fully erase the same line drawn in black from left to right.

Remembered No

8.5 Continue a Line

Syntax	Hexadecimal	0xFE 0x65 [x] [y]	
	Decimal	254 101 [x] [y]	
	ASCII	254 "e" [x] [y]	
Parameters	Parameter	Length	Description
	x	1	Left bounds.
	y	1	Top Bounds.
Description	This command will draw a line with the current drawing color from the last line end (x2,y2) to (x,y). This command uses the global drawing color.		
Remembered	No		

8.6 Draw a Rectangle

Syntax	Hexadecimal	0xFE 0x72 [color] [x1] [y1] [x2] [y2]	
	Decimal	254 114 [color] [x1] [y1] [x2] [y2]	
	ASCII	254 "r" [color] [x1] [y1] [x2] [y2]	
Parameters	Parameter	Length	Description
	color	1	Drawing color (0: White, 1-255: Black).
	x1	1	Left bounds.
	y1	1	Top Bounds.
	x2	1	Right Bounds.
	y2	1	Bottom Bounds.
Description	This command draws a rectangular box in the specified color (0: White, 1: Black). The top left corner is specified by (x1,y1) and the bottom right corner by (x2,y2).		
Remembered	No		

8.7 Drawing a Solid Rectangle

Syntax	Hexadecimal	0xFE 0x78 [color] [x1] [y1] [x2] [y2]	
	Decimal	254 120 [color] [x1] [y1] [x2] [y2]	
	ASCII	254 "x" [color] [x1] [y1] [x2] [y2]	
Parameters	Parameter	Length	Description
	color	1	Drawing color (0: White, 1-255: Black).
	x1	1	Left bounds.
	y1	1	Top Bounds.
	x2	1	Right Bounds.
	y2	1	Bottom Bounds.

Description	This command draws a solid rectangle in the specified color (0: White, 1: Black). The top left corner is specified by (x1,y1) and the bottom right corner by (x2,y2). Since this command involves considerable processing overhead, we strongly recommend the use of flow control, particularly if the command is to be repeated frequently.
Remembered	No

8.8 Initializing a Bar Graph

Syntax	Hexadecimal 0xFE 0x67 [refID] [type] [x1] [y1] [x2] [y2] Decimal 254 103 [refID] [type] [x1] [y1] [x2] [y2] ASCII 254 "g" [refID] [type] [x1] [y1] [x2] [y2]																					
Parameters	<table border="1"> <thead> <tr> <th>Parameter</th> <th>Length</th> <th>Description</th> </tr> </thead> <tbody> <tr> <td>refID</td> <td>1</td> <td>Reference number</td> </tr> <tr> <td>type</td> <td>1</td> <td>Type of bar graph.</td> </tr> <tr> <td>x1</td> <td>1</td> <td>Left bounds.</td> </tr> <tr> <td>y1</td> <td>1</td> <td>Top Bounds.</td> </tr> <tr> <td>x2</td> <td>1</td> <td>Right Bounds.</td> </tr> <tr> <td>y2</td> <td>1</td> <td>Bottom Bounds.</td> </tr> </tbody> </table>	Parameter	Length	Description	refID	1	Reference number	type	1	Type of bar graph.	x1	1	Left bounds.	y1	1	Top Bounds.	x2	1	Right Bounds.	y2	1	Bottom Bounds.
Parameter	Length	Description																				
refID	1	Reference number																				
type	1	Type of bar graph.																				
x1	1	Left bounds.																				
y1	1	Top Bounds.																				
x2	1	Right Bounds.																				
y2	1	Bottom Bounds.																				
Description	This command initializes a bar graph referred to by number [reference number] of type [type] with size from (x1,y1) (top left) to (x2,y2) (bottom right). A maximum of 16 bar graphs with reference numbers from 0 to 15 can be initialized as:																					
	<table border="1"> <thead> <tr> <th>[type]</th> <th>Direction</th> <th>Bar Start Point</th> </tr> </thead> <tbody> <tr> <td>0</td> <td>Vertical</td> <td>Bottom</td> </tr> <tr> <td>1</td> <td>Horizontal</td> <td>Left</td> </tr> <tr> <td>2</td> <td>Vertical</td> <td>Top</td> </tr> <tr> <td>3</td> <td>Horizontal</td> <td>Right</td> </tr> </tbody> </table>	[type]	Direction	Bar Start Point	0	Vertical	Bottom	1	Horizontal	Left	2	Vertical	Top	3	Horizontal	Right						
[type]	Direction	Bar Start Point																				
0	Vertical	Bottom																				
1	Horizontal	Left																				
2	Vertical	Top																				
3	Horizontal	Right																				
	<p>The bar graphs may be located anywhere on the display, but if they overlap, they will not display properly.</p> <p>It is important that [x1] is less than [x2], and [y1] is less than [y2]. This command doesn't actually draw the graph, it must be filled in using the Fill Bar Graph command. The unit saves time by only drawing that part of the bar graph which has changed from the last write, so the representation on the screen may not survive a screen clear or other corrupting action. A write of value zero, followed by new values will restore the proper look of the bar graph.</p>																					
Remembered	No																					

8.9 Drawing a Bar Graph

Syntax	Hexadecimal	0xFE 0x69 [ref] [value]	
	Decimal	254 105 [ref] [value]	
	ASCII	254 "i" [ref] [value]	
Parameters	Parameter	Length	Description
	ref	1	Initialized bar graph reference number.
Description	value	1	The number of pixels to fill.
	Once the bar graph has been initialized it can be filled in using this command. This command sets the bar graph specified by the [ref] number to fill in [value]. [value] is given in pixels and should not exceed the available height/width of the graph. (If it does the graph will simply be written to its maximum size.)		
Remembered	No		

8.10 Initializing a Strip Chart

Syntax	Hexadecimal	0xFE 0x6A [refID] [x1] [y1] [x2] [y2]	
	Decimal	254 106 [refID] [x1] [y1] [x2] [y2]	
	ASCII	254 "j" [refID] [x1] [y1] [x2] [y2]	
Parameters	Parameter	Length	Description
	refID	1	Reference number
	x1	1	Left bounds.
	y1	1	Top Bounds.
	x2	1	Right Bounds.
	y2	1	Bottom Bounds.

Description A strip chart is an area of the screen reserved for horizontal scrolling. This is normally used as follows:

- Initialize the strip chart, which reserves the appropriate area of the screen.
- Draw a line segment at the right or left side of the strip chart.
- Shift the strip chart to the right or left.
- Draw the next line segment.
- Used this way the strip chart can produce a graph which scrolls smoothly horizontally in either direction. With text the strip chart can produce a marquis effect.

NOTE If the strip chart is used with text we recommend the use of a 6 or 7 pixel wide fixed width character set, with each character placed 8 pixels from the start of the previous one.

Up to 7 strip charts ([ref] = 0 - 6) may be defined. To initialize a strip chart the user must define an area on the display in which to place the strip chart. (x1,y1) is the top left corner of the area to be used, where [x1] is the placement of the column where the strip chart is to begin and [y1] is the row. The user must then define [x2] as the bottom right column of the area to be utilized and [y2] as the bottom right row. The definition of x must lie on byte boundaries. That is, x must be defined as 0x00, 0x08, 0x10, etc. This restriction does not apply to y values.

Remembered No

8.11 Shifting a Strip Chart

Syntax	Hexadecimal 0xFE 0x6B [ref] Decimal 254 107 [ref] ASCII 254 "k" [ref]						
Parameters	<table border="1" style="border-collapse: collapse; width: 100%;"> <thead> <tr> <th style="text-align: left;">Parameter</th> <th style="text-align: left;">Length</th> <th style="text-align: left;">Description</th> </tr> </thead> <tbody> <tr> <td>ref</td> <td style="text-align: center;">1</td> <td>Reference number of a strip chart that has already been created.</td> </tr> </tbody> </table>	Parameter	Length	Description	ref	1	Reference number of a strip chart that has already been created.
Parameter	Length	Description					
ref	1	Reference number of a strip chart that has already been created.					

Description	<p>This command shifts the strip chart left or right. [ref] determines both which strip chart is used and which direction it will shift. The direction is selected by the most significant bit (MSB):</p> <ul style="list-style-type: none"> • MSB: 0 shifts left • MSB: 1 shifts right <p>For example if [ref] is 1:</p> <ul style="list-style-type: none"> • 254 107 1 (hex FE 6B 01) shifts left • 254 107 129 (hex FE 6B 81) shifts right <p>This command shifts the contents of the area defined in the Initialize Strip Chart command 8 pixels at a time.</p>
Remembered	No

9 Keypad

9.1 Introduction

The supports up to a 25 key, matrix style, keypad and may be configured to allow key presses to be automatically transmitted via RS-232 or polled through I²C. The also allows for auto-repeating key presses, and remapping of all keypad character codes.

The connector is not keyed so the keypad will probably plug in either of two ways. The display will not be damaged by reversing the connector. However, the keypad will generate a different ASCII character mapping for each position. If the connector has fewer than 10 pins it should be centered on the display connector. The keypad is scanned whenever a key is pressed;there is no continuous key scan. This means that key presses are dealt with immediately without any appreciable latency. This also prevents electrical noise which is often caused by continuous key scans.

9.1.1 I2C Interface

The keypad is read by I2C master read. In short, this means that a read of the module will always return the first unread key press. A read is initiated by writing to the module with its base address plus 1, then clocking the module's return byte after the module releases the SDA line. Much more detail on this basic I2C function can be found in the I2C specification by Phillips.

9.1.2 RS232 Interface

By default on any press of a key, the module will immediately send out the key code at the selected baud rate. This behavior can be modified using commands found in the next section.

9.2 Auto Transmit Key Presses On

Syntax	Hexadecimal	0xFE 0x41
	Decimal	254 65
	ASCII	254 “A”
Description	In this mode, all key presses are sent immediately to the host system without the use of the poll keypad command. This is the default mode on power up.	

NOTE This command is not available in I2C.

Remembered	Yes
Default	On

9.3 Auto Transmit Key Presses Off

Syntax	Hexadecimal	0xFE 0x4F
	Decimal	254 79
	ASCII	254 “O”
Description	In this mode, up to 10 key presses are buffered until the unit is polled by the host system, via the poll keypad command 254 38. Issuing this command places the unit in polled mode.	

NOTE This command is not available in I2C.

Remembered	Yes
------------	-----

9.4 Poll Key Press

Syntax	Hexadecimal	0xFE 0x26
	Decimal	254 38
	ASCII	254 “&”

Description This command returns any buffered key presses via the serial interface. The host system must be set up to receive key codes. When the display receives this command, it will immediately return any buffered key presses which may have not been read already. If there is more than one key press buffered, then the high order bit (MSB) of the returned key code will be set (1). If this is the only buffered key press, then the MSB will be cleared (0). If there are no buffered key presses, then the returned code will be 0x00. Please note that to make use of this command, the “Auto Transmit Key Presses” mode should be off.

NOTE This command is not available in I2C. To read keys in I2C mode, one just needs to address the module and read a byte. No preceding commands are necessary. If there are no keys pressed the read will result in a 0x00.

Remembered No

9.5 Clear Key Buffer

Syntax Hexadecimal 0xFE 0x45
 Decimal 254 69
 ASCII 254 “E”

Description This command clears any unread key presses. In a menu application, if the user presses a key which changes the menu context, any following key presses may be inaccurate and can be cleared out of the buffer between menu changes to prevent jumping around the menu tree. It may also be used, in effect, to reset the keypad in case the host application resets for whatever reason.

Remembered No

9.6 Set Debounce Time

Syntax Hexadecimal 0xFE 0x55 [time]
 Decimal 254 85 [time]
 ASCII 254 “U” [time]

Parameter	Length	Description
time	1	Debounce time in increments of 6.554ms (0 - 255).

Description	This command sets the time between key press and key read. All key types with the exception of latched piezo switches will 'bounce' for a varying time, depending on their physical characteristics. The [time] value is in increments of 6.554ms. The default debounce time for the module is 8 (about 52ms), which is adequate for most membrane keypads.
Remembered	Yes
Default	8

9.7 Set Auto Repeat Mode

Syntax	Hexadecimal	0xFE 0x7E [mode]	
	Decimal	254 126 [mode]	
	ASCII	254 “~” [mode]	
Parameters	Parameter	Length	Description
	mode	1	Auto Repeat Mode (0: Resend Key , 1: Key Up/Down)
Description	Two auto repeat modes are available and are set via the same command:		

- **Resend Key Mode:** 0x00
- **Key Up/Down Mode:** 0x01

Resend Key Mode This mode is similar to the action of a keyboard on a PC. In this mode, when a key is held down, the key code is transmitted immediately followed by a 1/2 second delay. After this delay, key codes will be sent via the RS-232 interface at a rate of about 5 codes per second. This mode has no effect if polling or if using the I²C interface.

Key Up/Down Mode This mode may be used when the typematic parameters of the “Resend Key Code” mode are unacceptable or if the unit is being operated in polled mode. The host system detects the press of a key and simulates an auto repeat inside the host system until the key release is detected. In this mode, when a key is held down, the key code is transmitted immediately and no other codes will be sent until the key is released. On the release of the key, the key release code transmitted will be a value equal to the key down code plus 20 hex.

Remembered	Yes
------------	-----

Examples When the key code associated with key 'P' (0x50) is pressed, the release code is 'p' (0x70). In RS-232 polled mode or via the I²C, the “Key Down / Key Up” codes are used; however, the user should be careful of timing details. If the poll rate is slower than the simulated auto-repeat it is possible that polling for a key up code will be delayed long enough for an unwanted key repeat to be generated.

9.8 Auto Repeat Mode Off

Syntax Hexadecimal 0xFE 0x60
 Decimal 254 96
 ASCII 254 “”

Description This command turns auto repeat mode off. See Set Auto Repeat Mode.

Remembered No

9.9 Assign Keypad Codes

Syntax Hexadecimal 0xFE 0xD5 [KDown] [KUp]
 Decimal 254 213 [KDown] [KUp]

Parameters Parameter Length Description

 KDown 25 Key down codes
 KUp 25 Key up codes

Description This command will allow you to reassign the key codes that correspond to the key presses on the matrix style key pad. The first 25 bytes that are transmitted will be used for the key down codes and the next 25 bytes that are transmitted will be used for the key up codes.

Key Down						Key Up					
	1	2	3	4	5		1	2	3	4	5
1	A	B	C	D	E	1	a	b	c	d	e
2	F	G	H	I	J	2	f	g	h	i	j
3	K	L	M	N	O	3	k	l	m	n	o
4	P	Q	R	S	T	4	p	q	r	s	t
5	U	V	W	X	Y	5	u	v	w	x	y

Remembered Always

10 Display Functions

10.1 Introduction

The employs software controlled display settings, which allow for control over, clearing the screen, changing the brightness and contrast or setting timers for turning it on or off. The combination of these allow you complete software control over your display's appearance.

10.2 Clear Screen

Syntax	Hexadecimal	0xFE 0x58
	Decimal	254 88
	ASCII	254 "X"
Description	This command clears the display and resets the text insertion position to the top left position of the screen defined in the font metrics.	
Remembered	No	

10.3 Display On

Syntax	Hexadecimal	0xFE 0x42 [min]						
	Decimal	254 66 [min]						
	ASCII	254 "B" [min]						
Parameters	<table border="1"><thead><tr><th>Parameter</th><th>Length</th><th>Description</th></tr></thead><tbody><tr><td>min</td><td>1</td><td>Minutes before turning the display on (0 to 90).</td></tr></tbody></table>	Parameter	Length	Description	min	1	Minutes before turning the display on (0 to 90).	
Parameter	Length	Description						
min	1	Minutes before turning the display on (0 to 90).						
Description	This command turns the backlight on after the [minutes] timer has expired, with a ninety minute maximum timer. A time of 0 specifies that the backlight should turn on immediately and stay on. When this command is sent while the remember function is on, the timer will reset and begin after power up.							
Remembered	Yes							
Default	0							

10.4 Display Off

Syntax	Hexadecimal	0xFE 0x46
	Decimal	254 70
	ASCII	254 "F"

Description This command turns the backlight off immediately. The backlight will remain off until a 'Display On' command has been received.

Remembered Yes

10.5 Set Brightness

Syntax Hexadecimal 0xFE 0x99 [brightness]
Decimal 254 153 [brightness]

Parameter	Length	Description
brightness	1	Display brightness setting (0 to 255).

Description This command sets the display [brightness]. If the remember function is on, this command acts the same as 'Set and Save Brightness'.

Remembered Yes

Default 255

10.6 Set and Save Brightness

Syntax Hexadecimal 0xFE 0x98 [brightness]
Decimal 254 152 [brightness]

Parameter	Length	Description
brightness	1	Backlight setting (0 to 255).

Description This command sets and saves the display [brightness] as default.

Remembered Always

10.7 Set Contrast

Syntax Hexadecimal 0xFE 0x50 [contrast]
Decimal 254 80 [contrast]
ASCII 254 "P" [contrast]

Parameter	Length	Description
contrast	1	Contrast value (0 to 255).

Description	This command sets the display's contrast to [contrast], where [contrast] is a value between 0x00 and 0xFF (between 0 to 255). Lower values cause 'on' elements in the display area to appear lighter, while higher values cause 'on' elements to appear darker. Lighting and temperature conditions will affect the actual value used for optimal viewing. Individual display modules will also differ slightly from each other in appearance. In addition, values for optimal viewing while the display backlight is on may differ from values used when backlight is off. This command does not save the [contrast] value, and is lost after power down; but this command has the option of remembering the settings when issued with the Remember function 'on'. When this is the case, this command is the same as the Set and Save Contrast command.
Remembered	Yes
Default	128

10.8 Set and Save Contrast

Syntax	Hexadecimal	0xFE 0x91 [contrast]	
	Decimal	254 145 [contrast]	
Parameters	Parameter	Length	Description
	contrast	1	Contrast value (0 to 255).
Description	This command sets the display's contrast to [contrast], where [contrast] is a value between 0x00 and 0xFF (between 0 to 255). Lower values cause 'on' elements in the display area to appear lighter, while higher values cause 'on' elements to appear darker. Lighting conditions will affect the actual value used for optimal viewing. Individual display modules will also differ slightly from each other in appearance. In addition, values for optimal viewing while the display backlight is on may differ from values used when backlight is off.		

NOTE This command saves the [contrast] value so that it is not lost after power down.

Remembered	Yes
Default	128

11 Filesystem

11.1 Introduction

The incorporates a 16 Kbyte on board flash memory in order to allow font and bitmap files to be transferred directly onto the display and recalled whenever necessary. The filesystem can address font and bitmap

files combined up to 16 Kbytes. This section covers uploading, downloading, deleting and moving files, as well as getting the remaining space or wiping the filesystem.

11.1.1 File Upload Protocol

In order to allow fonts and bitmaps to be uploaded to the on board flash memory Matrix Orbital has developed a simple protocol that supports RS-232/TTL or I²C communications. In order to begin a file transmission the first step will be to provide the display module with the appropriate command bytes, meaning the command prefix, 0xFE, followed by the command number, 0x24 for a font file, or 0x5E for a bitmap file. This will begin the file transfer sequence. The next step will be to request a reference identification number (ref ID) which will allow you to identify the file for future use. Reference ID numbers can be any byte between 0x01 and 0xFF, however each ID must be unique.

The next part of uploading a font file is to provide the display module with the two byte file size of the data that you wish to transfer, LSB to MSB. The LSB must be transmitted first followed by the MSB. After receiving the MSB the display module will send a confirm byte, 0x01, if the file fits and continue, or decline byte, 0x08, and terminate the session.

Byte	Description
0x01	Confirm: Will continue the file transfer.
0x08	Decline: Terminate the session.

The last part of uploading a font file is to upload the file data. After transmitting each byte of the file the module will echo the byte and wait for a confirmation byte of 0x01 until the file has completed uploading. Below is an example of uploading the font file which we created in *Section 5.1.2 on page 20*.

host	display
254	
' \$' (command)	
reference Id	
size low byte	
size high byte	
	0x01 is returned if size can be accomodated, otherwise 0x08 and the display aborts this command
check reply if not 0x01, upload is aborted	
data 0	
	echo data 0
confirm the echo with 0x01, otherwise if data is different, 0x08 is sent	

data 1	
	echo data 1
confirm the echo with	

At times that the display or the host sees anything else other than 0x01 for confirmation (usually a 0x08) the upload is aborted.

NOTES

- The has watch dog timer, set to 2.1 seconds in between transmissions, in order prevent the display module from staying in a waiting state.
 - Once the timeout has been reached the timer will reset the display and issue a 0xFE 0xD4 response to the host to signal that this has happened.
-

11.2 Wipe Filesystem

Syntax	Hexadecimal	0xFE 0x21 0x59 0x21
	Decimal	254 33 89 33
	ASCII	254 “!” “Y” “!”
Description	This command completely erases the display’s non-volatile memory. It removes all fonts, font metrics, bitmaps, and settings (current font, cursor position, communication speed, etc.). It is an “odd” command in that it is three bytes in length in order to prevent accidental execution.	
Remembered	Yes	

11.3 Deleting a File

Syntax	Hexadecimal	0xFE 0xAD [type] [refID]	
	Decimal	254 173 [type] [refID]	
Parameters	Parameter	Length	Description
	type	1	Type of file (0:Font, 1:Bitmap)
	refID	1	Reference ID of the file to delete.
Description	This command erases a single file at a time within the memory when given two parameters: [type] and [ref]. The file type and reference number are defined when the file is saved to the .		
	<ul style="list-style-type: none"> • [type] = 1: Bitmap • [type] = 0: Font 		
Remembered	Yes		

11.4 Get Filesystem Space

Syntax	Hexadecimal 0xFE 0xAF Decimal 254 175
Description	This command will return 4 bytes, LSB to MSB for how many bytes are remaining in the 16 KB on board memory.
Remembered	No

11.5 Get Filesystem Directory

Syntax	Hexadecimal 0xFE 0xB3 Decimal 254 179
Description	This command will return a directory of the contents of the file system. The first byte returned will be a hex value representing the number of entries in the filesystem, followed by four bytes for each entry. See the following tables:

Filesystem Header	
Bytes	Description
1	Hex value representing the number of entries in the filesystem
File Entry	
Bytes	Description
1	Flag: Hex value of 0x00 indicates that this file entry has not been used.
1	FileID/Type: 1st bit is the file type (0: Font, 1: Bitmap). Next 7 bits are the file ID.
1	File Size: LSB
1	File Size: MSB

Remembered No

11.6 Filesystem Upload

Syntax	Hexadecimal 0xFE 0xB0 [data] Decimal 254 176 [data]						
Parameters	<table border="1"> <thead> <tr> <th>Parameter</th> <th>Length</th> <th>Description</th> </tr> </thead> <tbody> <tr> <td>data</td> <td>4</td> <td>LSB to MSB filesystem image data</td> </tr> </tbody> </table>	Parameter	Length	Description	data	4	LSB to MSB filesystem image data
Parameter	Length	Description					
data	4	LSB to MSB filesystem image data					
Description	This command will upload a four byte filesystem image, LSB to MSB to the display (16KB).						
Remembered	Always						

11.7 Downloading a File

Syntax	Hexadecimal	0xFE 0xB2 [Type] [refID]	
	Decimal	254 178 [Type] [refID]	
Parameters	Parameter	Length	Description
	Type	1	File type (0:Font File, 1:Bitmap)
	refID	1	Reference ID number
Description	Download a specified file from the filesystem. The first 4 bytes will be the length of the file (LSB to MSB) followed by the data contained in the file.		
Remembered	No		

11.8 Moving a File

Syntax	Hexadecimal	0xFE 0xB4 [oldT] [oldID] [newT] [newID]	
	Decimal	254 180 [oldT] [oldID] [newT] [newID]	
Parameters	Parameter	Length	Description
	oldT	1	Old file type
	oldID	1	Old file ID
	newT	1	New file type
	newID	1	New file ID
Description	This command can be used to move a file to a new file ID, or correct the type of a file that was uploaded incorrectly. The command first checks to see if there is a file identified by [oldT] and [oldID]. If it does exist, and there is no file already with the desired type and ID, the ID and type of the old file will be changed to [newT] and [newID] respectively.		
Remembered	Always		

12 Data Security

12.1 Introduction

Ensuring that your display's exactly what you want it to can be the difference between a projects success and failure. This is why we incorporate features such as Data Lock into the With this new feature you now are in control over of how and when settings will be changed so there is no need to worry about the module acting exactly like you expected it to because all the settings may be locked and remembered for the next power up.

12.2 Set Remember

Syntax	Hexadecimal	0xFE 0x93 [switch]	
	Decimal	254 147 [switch]	
Parameters	Parameter	Length	Description
	switch	1	0: Do not remember, 1: Remember
Description	This command allows you to switch the remember function on and off. To use the remember function, set remember to on, then set all of the settings that you wish to save, settings that are listed as 'Remember: Yes' support being saved into the non-volatile memory. After you have set all of the commands that you wish to save, you may then cycle the power and check the display settings to ensure that all the settings have been saved. If you wish to use remember again after cycling the power, you must set it to on again.		

NOTES

- Writing to non-volatile memory is time consuming and slows down the operation of the display.
- Non-volatile memory has a 'write limit' and may only be changed approximately 100,000 times.

Remembered	No
Default	Do not remember

12.3 Data Lock

Syntax	Hexadecimal	0xFE 0xCA 0xF5 0xA0 [level]	
	Decimal	254 202 245 160 [level]	
Parameters	Parameter	Length	Description
	level	1	Sets the data lock level

Description

Paranoia allows you to lock the module from displaying information, as well as enables the protection of the filesystem and module settings.

Each bit corresponds corresponds to a different lock level, while sending a zero will unlock your display as the following tables explains:

Bit	Data Lock Level	Description
0-2	Reserved	Should be left 0
3	Communication Speed Lock	When this bit is set (1) the Baud Rate and I2C Slave address are locked
4	Setting Lock	When this bit is set (1) the display settings such as backlight, contrast and GPO settings are locked. (Internal EEPROM)
5	Filesystem Lock	When this bit is set (1) the external EEPROM is locked, this has the same effect as the File System Jumper
6	Command Lock	When this bit is set (1) all commands but commands 202/203 are locked. (cmd lock)
7	Display Lock	When this bit is set (1) the module is locked from displaying any new information. (text lock)

NOTES

- Sending a new data lock level will override the previous data lock level.
- Data lock levels may be combined.

Remembered
Default
Examples

Always

0

Hex	Dec	Binary	Description
0x00	0	0	Unlock
0x50	80	01010000	Setting and Command Lock

12.4 Set and Save Data Lock

Syntax	Hexadecimal	0xFE 0xCB 0xF5 0xA0 [level]	
	Decimal	254 203 245 160 [level]	
Parameters	Parameter	Length	Description
	level	1	Sets the data lock level
Description	This command will set and save the data lock level. See the Data Lock section for more information.		
Remembered	Always		
Default	0		

12.5 Dump the Filesystem

Syntax	Hexadecimal	0xFE 0x30	
	Decimal	254 48	
	ASCII	254 "0"	
Description	This will allow you to dump the filesystem for debugging purposes. It will return a 4 byte value LSB to MSB followed by 16384 bytes making up the file system.		
Remembered	No		

12.6 Writes the Customer Data

Syntax	Hexadecimal	0xFE 0x34 [data]	
	Decimal	254 52 [data]	
	ASCII	254 "4" [data]	
Parameters	Parameter	Length	Description
	data	16	Writes the customer data
Description	Writes the customer Data. 16 Bytes of data can be saved in non-volatile memory.		
Remembered	No		

12.7 Reads the Customer Data

Syntax	Hexadecimal	0xFE 0x35	
	Decimal	254 53	
	ASCII	254 "5"	

Description Reads whatever was written by Write Customer Data.
Remembered No

13 Miscellaneous

13.1 Introduction

This chapter covers the 'Report Version Number' and 'Read Module Type' commands. These commands can be particularly useful to find out more information about the display module before contacting technical support.

13.2 Read Version Number

Syntax Hexadecimal 0xFE 0x36
Decimal 254 54
ASCII 254 "6"
Description This command will return a byte representing the version of the module, see the following table as an example:

Hex Value	Version Number
0x10	Version 1.0
0x20	Version 2.0
0x42	Version 4.2

Remembered No

13.3 Read Module Type

Syntax Hexadecimal 0xFE 0x37
Decimal 254 55
ASCII 254 "7"

Description

This command will return a hex value corresponding to the the model number of the module see the following table:

Hex	Product ID	Hex	Product ID
1	LCD0821	38	LK204-24-USB
2	LCD2021	39	VK204-24-USB
5	LCD2041	3A	PK162-12
6	LCD4021	3B	VK162-12
7	LCD4041	3C	MOS-AP-162A
8	LK202-25	3D	PK202-25
9	LK204-25	3E	MOS-AL-162A
A	LK404-55	40	MOS-AV-202A
B	VFD2021	41	MOS-AP-202A
C	VFD2041	42	PK202-24-USB
D	VFD4021	43	MOS-AL-082
E	VK202-25	44	MOS-AL-204
F	VK204-25	45	MOS-AV-204
10	GLC12232	46	MOS-AL-402
13	GLC24064	47	MOS-AV-402
15	GLK24064-25	48	LK082-12
22	GLK12232-25	49	VK402-12
24	GLK12232-25-SM	4A	VK404-55
26	GLK24064-16-1U	4B	LK402-25
27	GLK19264-7-1U	4C	VK402-25
28	GLK12232-16	4D	PK204-25
29	GLK12232-16-SM	54	XBoard-U
31	LK404-AT	55	LK202-25-USB
32	MOS-AV-162A	56	VK202-25-USB
33	LK402-12	57	LK204-25-USB
34	LK162-12	58	VK204-25-USB
35	LK204-25PC	72	GLK240128-25
36	LK202-24-USB	73	LK404-25
37	VK202-24-USB	74	VK404-25

Remembered

No

14 Command Summary

14.1 Communications

Description	Syntax	Page
Turn Flow Control On	Hexadecimal	0xFE 0x3A [full] [empty]
	Decimal	254 58 [full] [empty]
	ASCII	254 “:” [full] [empty]

Description	Syntax	Page
Turn Flow Control Off	Hexadecimal	0xFE 0x3B
	Decimal	254 59
	ASCII	254 “;”
Changing the I ² C Slave Address	Hexadecimal	0xFE 0x33 [adr]
	Decimal	254 51 [adr]
	ASCII	254 “3” [adr]
Changing the Baud Rate	Hexadecimal	0xFE 0x39 [speed]
	Decimal	254 57 [speed]
	ASCII	254 “9” [speed]
Setting a Non-Standard Baud Rate	Hexadecimal	0xFE 0xA4 [speed]
	Decimal	254 164 [speed]

14.2 Fonts

Description	Syntax	Page
Uploading a Font File	Hexadecimal	0xFE 0x24 [refID] [size] [data]
	Decimal	254 36 [refID] [size] [data]
	ASCII	254 “\$” [refID] [size] [data]
Setting the Current Font	Hexadecimal	0xFE 0x31 [refID]
	Decimal	254 49 [refID]
	ASCII	254 “1” [refID]
Font Metrics	Hexadecimal	0xFE 0x32 [lm] [tm] [csp] [lsp] [srow]
	Decimal	254 50 [lm] [tm] [csp] [lsp] [srow]
	ASCII	254 “2” [lm] [tm] [csp] [lsp] [srow]
Set Box Space Mode	Hexadecimal	0xFE 0xAC [value]
	Decimal	254 172 [value]

14.3 Text

Description	Syntax	Page
Move Cursor Home	Hexadecimal	0xFE 0x48
	Decimal	254 72
	ASCII	254 “H”
Setting the Cursor Position	Hexadecimal	0xFE 0x47 [col] [row]
	Decimal	254 71 [col] [row]
	ASCII	254 “G” [col] [row]
Setting the Cursor Coordinate	Hexadecimal	0xFE 0x79 [x] [y]
	Decimal	254 121 [x] [y]
	ASCII	254 “y” [x] [y]
Auto Scroll On	Hexadecimal	0xFE 0x51
	Decimal	254 81
	ASCII	254 “Q”

Description	Syntax	Page
Auto Scroll Off	Hexadecimal	0xFE 0x52
	Decimal	254 82
	ASCII	254 "R"

14.4 Bitmaps

Description	Syntax	Page
Uploading a Bitmap File	Hexadecimal	0xFE 0x5E [refID] [size] [data]
	Decimal	254 94 [refID] [size] [data]
	ASCII	254 "^" [refID] [size] [data]
Drawing a Bitmap from Memory	Hexadecimal	0xFE 0x62 [refID] [X] [Y]
	Decimal	254 98 [refID] [X] [Y]
	ASCII	254 "b" [refID] [X] [Y]
Drawing a Bitmap Directly	Hexadecimal	0xFE 0x64 [X] [Y] [W] [H] [D]
	Decimal	254 100 [X] [Y] [W] [H] [D]
	ASCII	254 "d" [X] [Y] [W] [H] [D]

14.5 Bar Graphs and Drawing

Description	Syntax	Page
Set Drawing Color	Hexadecimal	0xFE 0x63 [color]
	Decimal	254 99 [color]
	ASCII	254 "c" [color]
Draw Pixel	Hexadecimal	0xFE 0x70 [x] [y]
	Decimal	254 112 [x] [y]
	ASCII	254 "p" [x] [y]
Drawing a Line	Hexadecimal	0xFE 0x6C [x1] [y1] [x2] [y2]
	Decimal	254 108 [x1] [y1] [x2] [y2]
	ASCII	254 "l" [x1] [y1] [x2] [y2]
Continue a Line	Hexadecimal	0xFE 0x65 [x] [y]
	Decimal	254 101 [x] [y]
	ASCII	254 "e" [x] [y]
Draw a Rectangle	Hexadecimal	0xFE 0x72 [color] [x1] [y1] [x2] [y2]
	Decimal	254 114 [color] [x1] [y1] [x2] [y2]
	ASCII	254 "r" [color] [x1] [y1] [x2] [y2]
Drawing a Solid Rectangle	Hexadecimal	0xFE 0x78 [color] [x1] [y1] [x2] [y2]
	Decimal	254 120 [color] [x1] [y1] [x2] [y2]
	ASCII	254 "x" [color] [x1] [y1] [x2] [y2]
Initializing a Bar Graph	Hexadecimal	0xFE 0x67 [refID] [type] [x1] [y1] [x2] [y2]
	Decimal	254 103 [refID] [type] [x1] [y1] [x2] [y2]
	ASCII	254 "g" [refID] [type] [x1] [y1] [x2] [y2]

Description	Syntax	Page
Drawing a Bar Graph	Hexadecimal	0xFE 0x69 [ref] [value]
	Decimal	254 105 [ref] [value]
	ASCII	254 “i” [ref] [value]
Initializing a Strip Chart	Hexadecimal	0xFE 0x6A [refID] [x1] [y1] [x2] [y2]
	Decimal	254 106 [refID] [x1] [y1] [x2] [y2]
	ASCII	254 “j” [refID] [x1] [y1] [x2] [y2]
Shifting a Strip Chart	Hexadecimal	0xFE 0x6B [ref]
	Decimal	254 107 [ref]
	ASCII	254 “k” [ref]

14.6 Keypad

Description	Syntax	Page
Auto Transmit Key Presses On	Hexadecimal	0xFE 0x41
	Decimal	254 65
	ASCII	254 “A”
Auto Transmit Key Presses Off	Hexadecimal	0xFE 0x4F
	Decimal	254 79
	ASCII	254 “O”
Poll Key Press	Hexadecimal	0xFE 0x26
	Decimal	254 38
	ASCII	254 “&”
Clear Key Buffer	Hexadecimal	0xFE 0x45
	Decimal	254 69
	ASCII	254 “E”
Set Debounce Time	Hexadecimal	0xFE 0x55 [time]
	Decimal	254 85 [time]
	ASCII	254 “U” [time]
Set Auto Repeat Mode	Hexadecimal	0xFE 0x7E [mode]
	Decimal	254 126 [mode]
	ASCII	254 “~” [mode]
Auto Repeat Mode Off	Hexadecimal	0xFE 0x60
	Decimal	254 96
	ASCII	254 “”
Assign Keypad Codes	Hexadecimal	0xFE 0xD5 [KDown] [KUp]
	Decimal	254 213 [KDown] [KUp]

14.7 Display Functions

Description	Syntax	Page
Clear Screen	Hexadecimal	0xFE 0x58
	Decimal	254 88
	ASCII	254 “X”

Description	Syntax	Page
Display On	Hexadecimal	0xFE 0x42 [min]
	Decimal	254 66 [min]
	ASCII	254 “B” [min]
Display Off	Hexadecimal	0xFE 0x46
	Decimal	254 70
	ASCII	254 “F”
Set Brightness	Hexadecimal	0xFE 0x99 [brightness]
	Decimal	254 153 [brightness]
Set and Save Brightness	Hexadecimal	0xFE 0x98 [brightness]
	Decimal	254 152 [brightness]
Set Contrast	Hexadecimal	0xFE 0x50 [contrast]
	Decimal	254 80 [contrast]
	ASCII	254 “P” [contrast]
Set and Save Contrast	Hexadecimal	0xFE 0x91 [contrast]
	Decimal	254 145 [contrast]

14.8 Filesystem

Description	Syntax	Page
Wipe Filesystem	Hexadecimal	0xFE 0x21 0x59 0x21
	Decimal	254 33 89 33
	ASCII	254 “!” “Y” “!”
Deleting a File	Hexadecimal	0xFE 0xAD [type] [refID]
	Decimal	254 173 [type] [refID]
Get Filesystem Space	Hexadecimal	0xFE 0xAF
	Decimal	254 175
Get Filesystem Directory	Hexadecimal	0xFE 0xB3
	Decimal	254 179
Filesystem Upload	Hexadecimal	0xFE 0xB0 [data]
	Decimal	254 176 [data]
Downloading a File	Hexadecimal	0xFE 0xB2 [Type] [refID]
	Decimal	254 178 [Type] [refID]
Moving a File	Hexadecimal	0xFE 0xB4 [oldT] [oldID] [newT] [newID]
	Decimal	254 180 [oldT] [oldID] [newT] [newID]

14.9 Data Security

Description	Syntax	Page
Set Remember	Hexadecimal	0xFE 0x93 [switch]
	Decimal	254 147 [switch]
Data Lock	Hexadecimal	0xFE 0xCA 0xF5 0xA0 [level]
	Decimal	254 202 245 160 [level]

Description	Syntax	Page
Set and Save Data Lock	Hexadecimal 0xFE 0xCB 0xF5 0xA0 [level]	49
	Decimal 254 203 245 160 [level]	
Dump the Filesystem	Hexadecimal 0xFE 0x30	49
	Decimal 254 48	
	ASCII 254 "0"	
Writes the Customer Data	Hexadecimal 0xFE 0x34 [data]	49
	Decimal 254 52 [data]	
	ASCII 254 "4" [data]	
Reads the Customer Data	Hexadecimal 0xFE 0x35	49
	Decimal 254 53	
	ASCII 254 "5"	

14.10 Miscellaneous

Description	Syntax	Page
Read Version Number	Hexadecimal 0xFE 0x36	50
	Decimal 254 54	
	ASCII 254 "6"	
Read Module Type	Hexadecimal 0xFE 0x37	50
	Decimal 254 55	
	ASCII 254 "7"	

14.11 Command By Number

Command	Description	Page		
Hex	Dec	ASCII		
0x21	33	"!"	Wipe Filesystem	44
0x24	36	"\$"	Uploading a Font File	22
0x26	38	"&"	Poll Key Press	35
0x30	48	"0"	Dump the Filesystem	49
0x31	49	"1"	Setting the Current Font	22
0x32	50	"2"	Font Metrics	23
0x33	51	"3"	Changing the I ² C Slave Address	16
0x34	52	"4"	Writes the Customer Data	49
0x35	53	"5"	Reads the Customer Data	49
0x36	54	"6"	Read Version Number	50
0x37	55	"7"	Read Module Type	50
0x39	57	"9"	Changing the Baud Rate	17
0x3A	58	":"	Turn Flow Control On	15
0x3B	59	","	Turn Flow Control Off	16
0x41	65	"A"	Auto Transmit Key Presses On	35
0x42	66	"B"	Display On	39

Command	Description	Page		
Hex	Dec	ASCII		
0x45	69	“E”	Clear Key Buffer	36
0x46	70	“F”	Display Off	39
0x47	71	“G”	Setting the Cursor Position	25
0x48	72	“H”	Move Cursor Home	24
0x4F	79	“O”	Auto Transmit Key Presses Off	35
0x50	80	“P”	Set Contrast	40
0x51	81	“Q”	Auto Scroll On	25
0x52	82	“R”	Auto Scroll Off	26
0x55	85	“U”	Set Debounce Time	36
0x58	88	“X”	Clear Screen	39
0x5E	94	“^”	Uploading a Bitmap File	26
0x60	96	“”	Auto Repeat Mode Off	38
0x62	98	“b”	Drawing a Bitmap from Memory	27
0x63	99	“c”	Set Drawing Color	28
0x64	100	“d”	Drawing a Bitmap Directly	27
0x65	101	“e”	Continue a Line	29
0x67	103	“g”	Initializing a Bar Graph	31
0x69	105	“i”	Drawing a Bar Graph	31
0x6A	106	“j”	Initializing a Strip Chart	32
0x6B	107	“k”	Shifting a Strip Chart	33
0x6C	108	“l”	Drawing a Line	29
0x70	112	“p”	Draw Pixel	29
0x72	114	“r”	Draw a Rectangle	30
0x78	120	“x”	Drawing a Solid Rectangle	30
0x79	121	“y”	Setting the Cursor Coordinate	25
0x7E	126	“~”	Set Auto Repeat Mode	37
0x91	145		Set and Save Contrast	41
0x93	147		Set Remember	47
0x98	152		Set and Save Brightness	40
0x99	153		Set Brightness	40
0xA4	164		Setting a Non-Standard Baud Rate	18
0xAC	172		Set Box Space Mode	23
0xAD	173		Deleting a File	44
0xAF	175		Get Filesystem Space	44
0xB0	176		Filesystem Upload	45
0xB2	178		Downloading a File	46
0xB3	179		Get Filesystem Directory	45
0xB4	180		Moving a File	46
0xCA	202		Data Lock	47

15 Appendix

15.1 Specifications

15.1.1 Environmental

Table 74: Environmental Specifications

	Standard Temperature	Extended Temperature
Operating Temperature	0°C to +50°C	-20°C to +70°C
Storage Temperature	-20°C to +70°C	-30°C to +80°C
Operating Relative Humidity	90% max non-condensing	
Vibration (Operating)	4.9 m/s ² XYZ directions	
Vibration (Non-Operating)	19.6 m/s ² XYZ directions	
Shock (Operating)	29.4 m/s ² XYZ directions	
Shock (Non-Operating)	490 m/s ² XYZ directions	

15.1.2 Electrical

Table 75: Electrical Specifications

	Standard	Wide Voltage (V)	Wide Voltage with Efficient Switching Power Supply (VPT)
Supply Voltage	+5Vdc ±0.25V	+9V to +15V	+9V to +35V
Backlight On	110 mA typical		
Backlight Off Supply	40 mA		
Power Conservation	35 mA		

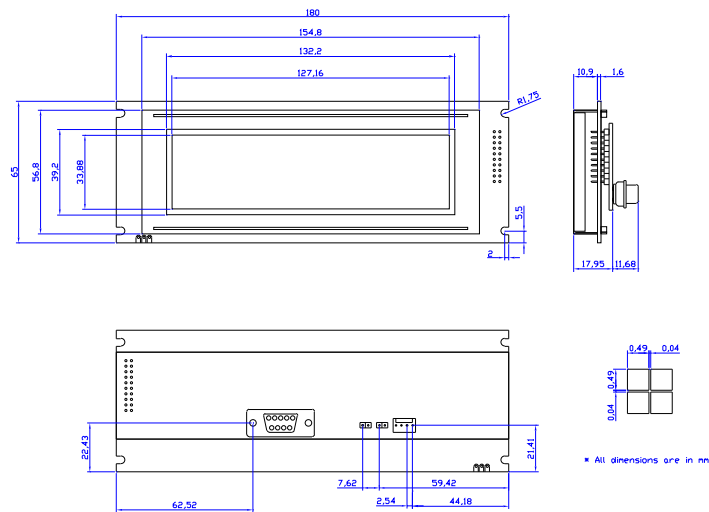
15.2 Optical Characteristics

Table 76: Optical Characteristics

Pixel Layout	240 x 64 pixels XxY
Number of Characters	320 (maximum 40 characters x 8 Lines with 5x7 font)
Display Area	127.16 x 33.88mm XxY
Dot Size	S
Dot Pitch	0.53 x 0.53mm (XxY)
LED Backlight Life	100,000 hours typical
Backlight	Yellow/Green LED Blue LED White LED

15.3 Physical Layout

Figure 22: Physical Diagram



15.4 Definitions

E Extended Temperature (-20C to 70C)

VPT Wide Voltage with Efficient Switching Power Supply (+9 to +35Vdc)

V Wide Voltage (+9 to +15Vdc)

GW Grey Text / White Background

WB White Text / Blue Background

MSB Most Significant Byte

LSB Least Significant Byte

15.5 Contacting Matrix Orbital

Telephone

Sales and Support: 1(403)229-2737

On The Web

Sales: <http://www.MatrixOrbital.com>

Support: <http://www.MatrixOrbital.ca>

Forums: <http://www.lcdforums.com>